

**B5.5.1**

Byt / Flat

**4+kk**

Dispozícia / Rooms

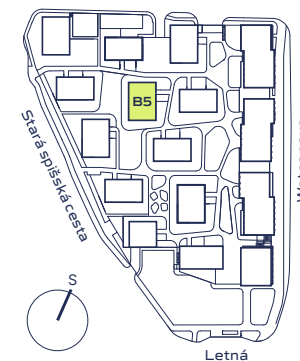
**5**

Podlažie / Floor

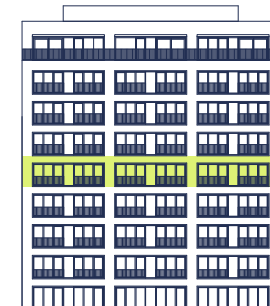
**84,45 m<sup>2</sup>**

Plocha / Area

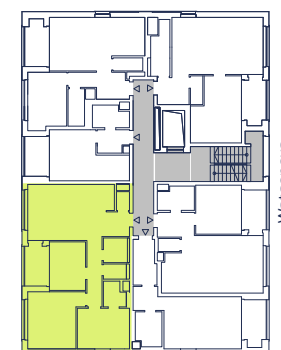
Plán projektu / Siteplan



Budova / Building



Patro / Floor



**Kategória**  
Category

**COMFORT**

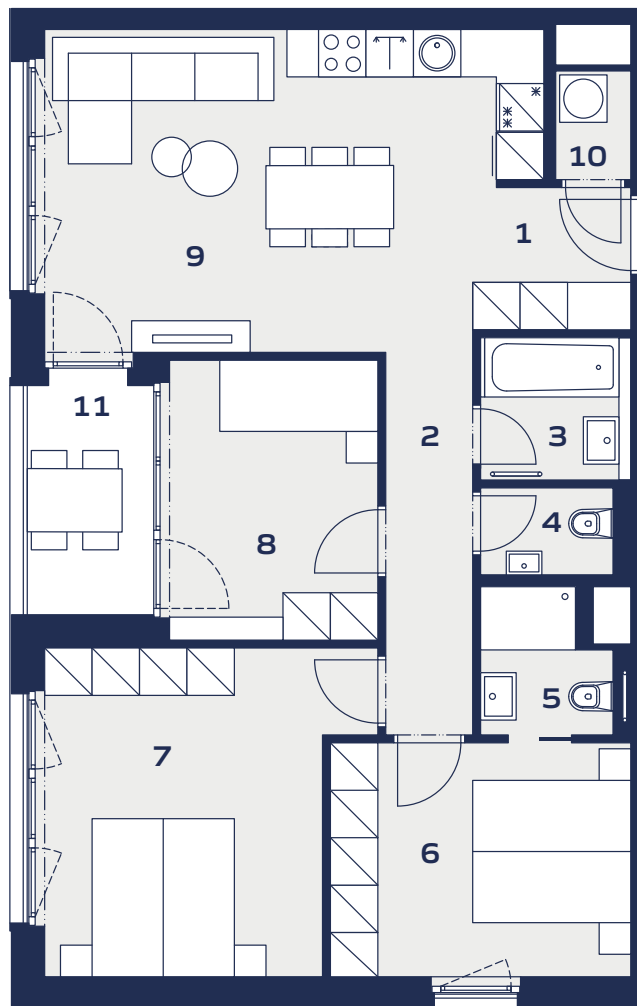
1	Chodba / Corridor	3,60 m <sup>2</sup>
2	Chodba / Corridor	5,70 m <sup>2</sup>
3	Kúpeľňa / Bathroom	3,15 m <sup>2</sup>
4	WC / Toilet	1,85 m <sup>2</sup>
5	Kúpeľňa / Bathroom	2,80 m <sup>2</sup>
6	Spáľňa / Bedroom	11,40 m <sup>2</sup>
7	Izba / Room	15,70 m <sup>2</sup>
8	Izba / Room	9,70 m <sup>2</sup>
9	Obývacia izba / Living room	24,35 m <sup>2</sup>
10	Komora / Storage	1,35 m <sup>2</sup>
11	Lodžia / Loggia	4,85 m <sup>2</sup>

**Plocha bytu**  
Living Area

**79,60 m<sup>2</sup>**

**Celková plocha**  
Total Area

**84,45 m<sup>2</sup>**



**CTR WatsoNova s. r. o.**  
Štúrova 27, 040 01 Košice  
sales@watsonova.sk  
+421 905 252 252

[www.watsonova.sk](http://www.watsonova.sk)

Celková plocha je plocha bytu vrátane vonkajších plôch (balkónov, lodží, terás). Zariadenie uvedené v pláne bytu (nábytok, kuchynská linka, elektrické spotrebiče atď.) nie je zahrnuté v cene bytu. Rozsah dodávky je uvedený v štandarde. Developer si vyhradzuje právo na drobné úpravy. / The total area is the area of the apartment, including outdoor areas (balconies, loggias, terraces). The equipment shown in the apartment plans (furniture, kitchen, electrical appliances, etc.) is not included in the final price. The scope of delivery is specified in the standard. The developer reserves the right to minor modifications.

**CTR**  
WatsoNova

Member of CTR Holding